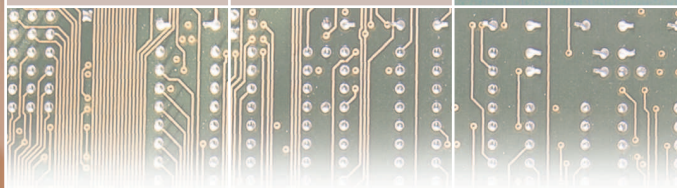
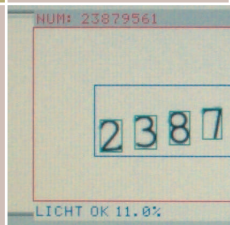




Joop Agterberg, managing director at Impress in Woerden.

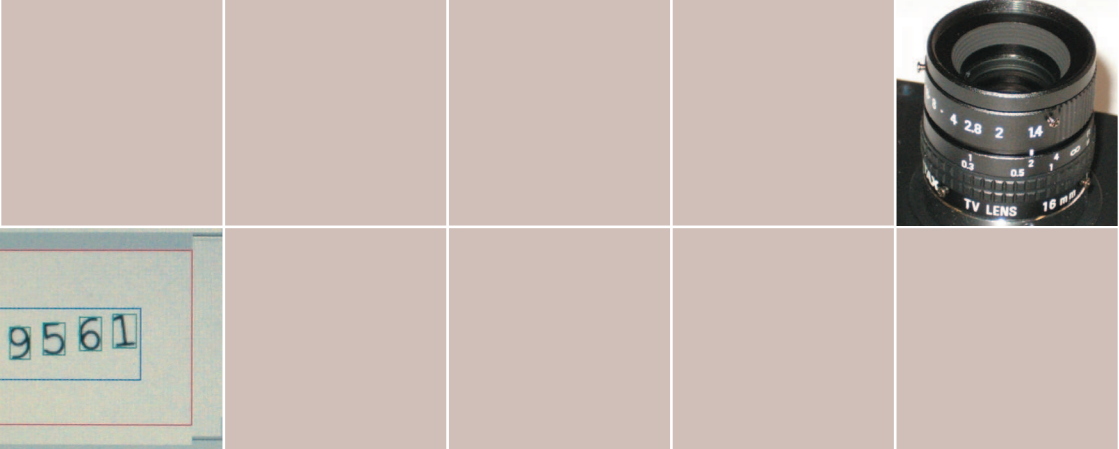
"At Impress we had been performing the checks on the envelope insertion and closing process by hand for a long time. I wanted our efficiency to make a change for the better, so we took a close and critical look at what the existing market had to offer in the way of camera systems. Quite quickly it became clear that there were a lot of snags with the various systems. Usually you needed extremely specialized, technical knowledge to set these systems up and read the data on the screen. That's what gave us the idea to have experts in the field of image processing develop a unique camera system. With IntelliMatch, developed by Q.E.F., I have found everything I needed. The system is efficient, reliable, extremely user-friendly and what's more, it is the least expensive on the market. It is the first camera system that doesn't need any operation instructions! I am quite prepared to say that with IntelliMatch we have saved a good 20 to 25 percent with respect to the traditional camera systems."



IntelliMatch: seeing is believing

Reliable equipment is what makes or breaks envelope insertion and closing for personalized mailings. After all, the reply card addressed to Mr. Smith shouldn't end up on Mrs. Peters' doorstep. Q.E.F. introduces IntelliMatch: a revolutionary camera system, reliable and also extremely efficient and user-friendly.

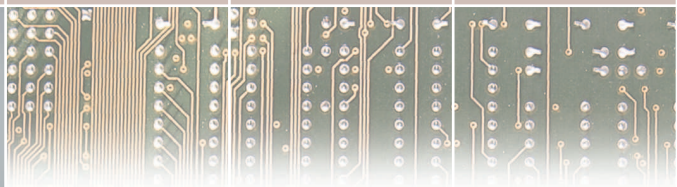
Checking the envelope insertion and closing process was done for years through manual random checks. And that is simply because there was no adequate technical solution for addressing the problem of 'mismatches'. What a toilsome job! And moreover, this method is certainly not watertight, for, as you know, the entire production goes wrong if 'mismatches' continue unnoticed. Over the years various camera systems have made their appearance to bring an end to the above situation. Unfortunately these systems regularly caused unnecessary stops, because they didn't recognize the different fonts and background colors of mailings. Moreover, specific technical knowledge was required to be able to operate the systems properly, and setting them up demanded a great deal of your precious time...



This revolutionary camera system can be supplied totally tailored to suit any situation.

Q.E.F. is keen to advise you of the many possibilities based on your personal desires and requirements and the application aims. Currently dozens of unique systems have been supplied to different clients in Europe.

An on-site demonstration is one of the possibilities, for seeing IntelliMatch at work is believing!



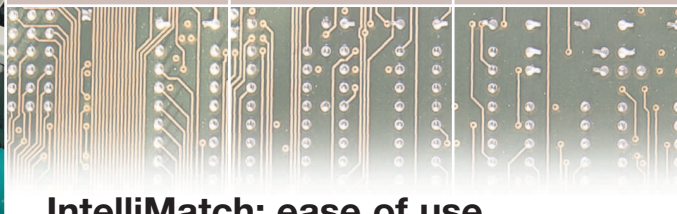
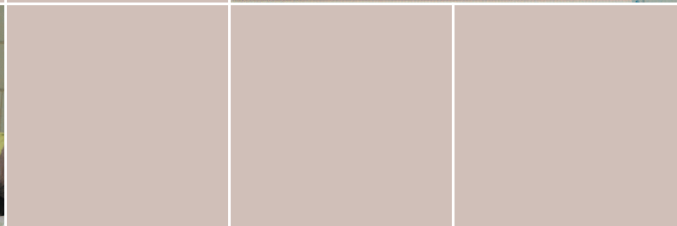
IntelliMatch: time-saving

Engineering company Q.E.F. used this issue – daily practice – as the basis for building a user-friendly and font-independent camera system. After a comprehensive development procedure, dozens of systems are now operational.

The IntelliMatch is the first camera system that is totally independent of machine and hardware: that means that you can install the system on every conceivable (envelope insertion and closing) machine. Furthermore, the IntelliMatch can be set up so swiftly (about 20 seconds to no more than 1 minute) that it is also worth using for smaller production runs.



E



IntelliMatch: ease of use

Your partner in vision solutions

Q.E.F., leader in the field of vision applications, is glad to be of service in solving a wide range of vision problems. The IntelliMatch system can be used in every procedure where it is desirable to check your documents. Just think of processing postal items, but also of read-and-print on film wrapping machines, selective inclusions and pick-and-place.

Q.E.F. is a dynamic engineering company with years of experience in the field of developing electronics for the food and industrial sectors, automotive industry and agriculture and horticulture. In addition, Q.E.F. uses hardware developed in-house to perform demanding vision tasks.

Operating this unique camera system is as effective as it is simple; in addition, the system is totally maintenance-free. The IntelliMatch uses a neural network to read the relation numbers, KIX, OMR or bar codes on the different documents and recognizes them in every desired font or color. The machine stops immediately in the event of a mismatch. A simple touch screen is used to operate the system; any operator can handle this. The cameras can read even the smallest (5 points) characters with ease, and the lighting of the system is also controlled totally automatically.

